

standard version X551M2

Ex-proof stainless steel drive X551M2	
Type of protection	Ex II 2G Ex db IIB T6 Gb
Ingress protection	IP68 h2m (20 kPa)
Ambient temperature	-20 °C to +40 °C
Rated voltage (acc. to the used electrical motor)	6, 12, 24, 48, 110 or 230 V AC/DC
Maximum dissipation power of the enclosure (for temperature class T6)	9,5 W – with rubber cable (H07RN-F as standard) 17 W – with a cable with a higher heat resistance
Cable connection	According to the used electrical motor
Max. torque	4 Nm
Enclosure material	Stainless steel



application with a petroleum substances separator

**Use**

The explosion-proof stainless steel drive serves as a source of rotary motion for devices in areas with a danger of explosion of flammable gases and vapours (e.g. separators of petroleum substances, mixers, etc.).

**Drive design**

It is designed as a flameproof enclosure with direct entry. The equipment consists of a motor shaft and a motor enclosure weldment from stainless steel with a cable gland of a certified type. The motor and its gearbox are fixed in the enclosure with the protection IP 68 h2m (20 kPa). High-quality high-speed DC electric motors MAXON are used as standard. Custom deliveries with other motor types can be inbuilt with respect to dimensions of the enclosure and technical data - see below.

An integral part of the enclosure is a permanently connected flexible cable to power supply the motor.

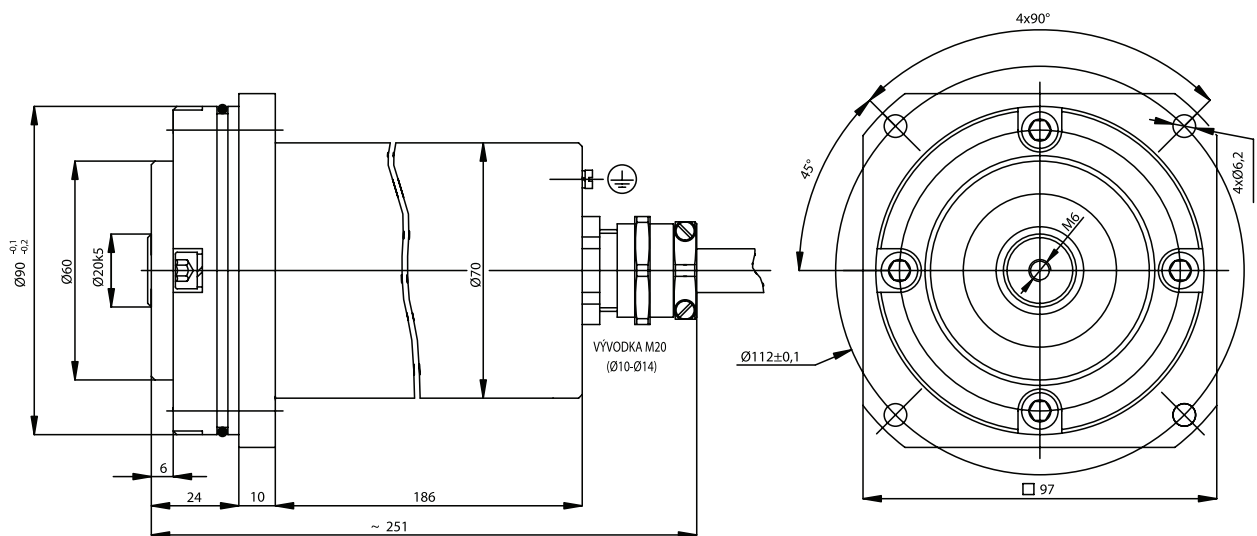
**Explosion-proof drive attachment:**

Standard version:

The flange of the drive enclosure is attached to the given equipment by means of four screws M6 long 20 mm min. in the 4x 90° spacing on the 112 mm diameter - see Fig.

Customer version:

Spacings of the mounting holes or the whole shaft shape can be modified according to customer's needs if required.



More technical data to the X551M2 type on demand – e-mail: obchod@generi.cz.