

GENEL

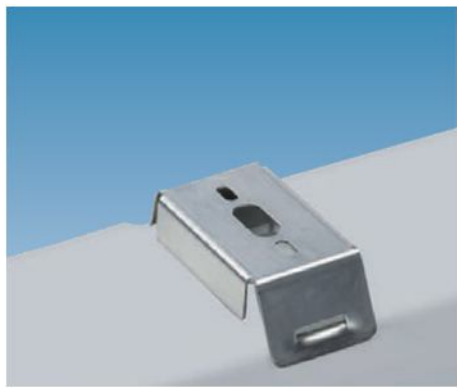
Ex linear lighting fitting for zone 2 and 22 Fluorescent lamp or LED version

General:

The lighting fittings with IP 65 protection are intended to be installed in particular in interiors defined as areas with danger of explosion in zones 2 and 22.

They meet requirements of Government Decree No. 116/2016 Coll. and European Community Directive 2014/34/EU.

The lighting fitting resists dust, moisture and water jets. The base and the diffuser made of polycarbonate (PC) have increased resistance to deformation and impact.



NEWS



25+
years
of power

Product group and category:
II 3G / 2D: zone 2 and 22

Explosion-proof design:
Ex nA IIC T6 Gc /
Ex tc IIIC T85°C Dc

Ambient temperature:
-20°C to +40°C
Protection:
IP65

Lighting fitting material:
- Base: grey polycarbonate
- Diffuser: translucent polycarbonate
- Clips: stainless steel, polyamide
- Reflector: white steel plate

Dimensions:
36 – 1272 × 145 × 111 mm
58 – 1572 × 145 × 111 mm

LED colour:
4,000 K
LED lifetime:
50,000 hours / L80B20

Tubular discharge lamps	Output [W]	Light flux [lm]	Weight [kg]
GENEL Ex 136	1 × 36	according to type of tube	2.5
GENEL Ex 236	2 × 36		2.6
GENEL Ex 158	1 × 58		3.5
GENEL Ex 258	2 × 58		3.6
LED modules			
GENEL Ex 136/L	24	3,200	3.2
GENEL Ex 136/H	31	4,400	3.3
GENEL Ex 236/L	43	6,400	3.4
GENEL Ex 236/H	60	8,800	3.5
GENEL Ex 158/L	30	4,000	4.1
GENEL Ex 158/H	40	5,500	4.2
GENEL Ex 258/L	54	8,000	4.3
GENEL Ex 258/H	73	11,000	4.4