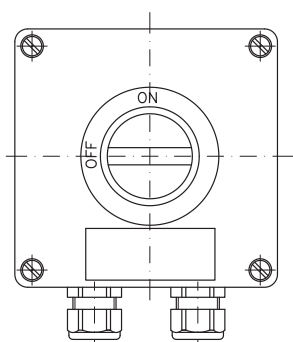


X20SA1 V3..A16-1B



X20SA1 V3..A16-2Bz
X20SA1 V3..A16-2Rz

Fill in a control head code instead of the question mark			
Code	Size	Colour	Locking
1B	ø 40 mm	black	no
1Bz	ø 40 mm	black	yes
2Bz	ø 64 mm	black	yes, padlock
2Rz	ø 64 mm	red	yes, padlock

Type of protection	Ⓢ II 2G Ex db eb IIC T6 Gb Ⓢ II 2D Ex tb IIIC T85°C Db
Ingress protection	IP65
Material, dimensions	polyester, (w × h × d) 122 × 120 × 90 mm
Mounting holes / spacings	4 × ø 6,6 / 106 × 82 mm
Ambient temperature	-20 °C to +40 °C -40 °C to +40 °C – version ../LT
Weight	1,2 kg
Cable glands	2 × M25 (ø 7 – ø 17) mm
Connection	spring-cage / screw terminals 4 mm ²
Rated voltage	690 V AC, 220 V DC
Rated current	16 A

AC15: 415V/16A AC3: 500V/8A DC1: 24V/10A			Order number														
2-pole switch		<table border="1"> <tr><td>0</td><td>I</td></tr> <tr><td>13</td><td>X</td></tr> <tr><td>23</td><td>X</td></tr> <tr><td>14</td><td>24</td></tr> </table>	0	I	13	X	23	X	14	24	X20SA1 V302A16-?						
0	I																
13	X																
23	X																
14	24																
4-pole switch		<table border="1"> <tr><td>0</td><td>I</td></tr> <tr><td>13</td><td>X</td></tr> <tr><td>23</td><td>X</td></tr> <tr><td>33</td><td>X</td></tr> <tr><td>43</td><td>X</td></tr> <tr><td>14</td><td>24</td></tr> <tr><td>34</td><td>44</td></tr> </table>	0	I	13	X	23	X	33	X	43	X	14	24	34	44	X20SA1 V304A16-?
0	I																
13	X																
23	X																
33	X																
43	X																
14	24																
34	44																
3-way switch		<table border="1"> <tr><td>I</td><td>II</td></tr> <tr><td>11</td><td>X</td></tr> <tr><td>23</td><td>X</td></tr> <tr><td>12</td><td>24</td></tr> </table>	I	II	11	X	23	X	12	24	X20SA1 V311A16-?						
I	II																
11	X																
23	X																
12	24																
4-way switch (intermediate switch)		<table border="1"> <tr><td>I</td><td>II</td></tr> <tr><td>13</td><td>X</td></tr> <tr><td>23</td><td>X</td></tr> <tr><td>31</td><td>X</td></tr> <tr><td>41</td><td>X</td></tr> <tr><td>14</td><td>24</td></tr> <tr><td>32</td><td>42</td></tr> </table>	I	II	13	X	23	X	31	X	41	X	14	24	32	42	X20SA1 V312A16-?
I	II																
13	X																
23	X																
31	X																
41	X																
14	24																
32	42																
3-position change-over switch		<table border="1"> <tr><td>0</td><td>I</td><td>II</td></tr> <tr><td>13</td><td>X</td><td>X</td></tr> <tr><td>23</td><td>X</td><td>X</td></tr> <tr><td>14</td><td>24</td><td>32</td></tr> </table>	0	I	II	13	X	X	23	X	X	14	24	32	X20SA1 V322A16-?		
0	I	II															
13	X	X															
23	X	X															
14	24	32															

AC3: 690V/16A AC15: 415V/16A DC1: 24V/10A, 60V/10A			Order number														
3-pole switch with auxiliary contact		<table border="1"> <tr><td>0</td><td>I</td></tr> <tr><td>1</td><td>X</td></tr> <tr><td>3</td><td>X</td></tr> <tr><td>5</td><td>X</td></tr> <tr><td>13</td><td>X</td></tr> <tr><td>2</td><td>4</td></tr> <tr><td>6</td><td>14</td></tr> </table>	0	I	1	X	3	X	5	X	13	X	2	4	6	14	X20SA1 V333A16-?
0	I																
1	X																
3	X																
5	X																
13	X																
2	4																
6	14																

Other variants to order.

Detailed technical data on demand – e-mail: obchod@generi.cz.